

TWGHs Wong Fut Nam College  
Mock Examination  
2022-23  
Form 6      Visual Arts  
Paper 1  
Visual Presentation of a Theme

Setter: Yeung Yu Ling

Date: 3/2/2023

Total marks: 100

Time: 8:30 a.m. – 12:30 p.m.

Total no. of pages: 11

Time allowed: 4 hour

---

Instructions:

- This paper consists of five questions. Attempt **ONE** question only. Complete both Parts A and B of the question. Candidates should first complete Part A.
- **Part A: Art appreciation and Criticism (45 minutes)**
- Write a critical appreciation of the works of art provided. Write your answer in the answer book provided, which will be collected 45 minutes after the start of the examination. This section carries 20 marks.
- **Part B: Visual Arts making (3 hours and 15 minutes)**
- On the white cartridge paper provided, create a piece of two-dimensional artwork using any medium, form, style and technique to present a theme. Create briefs such as notes, sketches and layouts that you produce for the examination should be written/drawn on the white bond paper provided. The white bond paper may be submitted along with the finished work to explain your artwork. This section carries 80 marks.

Go on to the next page

1. (A) Describe, analyse and compare the forms and expressions of Plate (1a) and Plate (1b); interpret and evaluate these works. (20 marks)



Plate (1a) Shitao (石濤). *Plum Blossoms* (梅花). 1682. Ink on Paper. 18 x 13.5cm

Go on to the next page

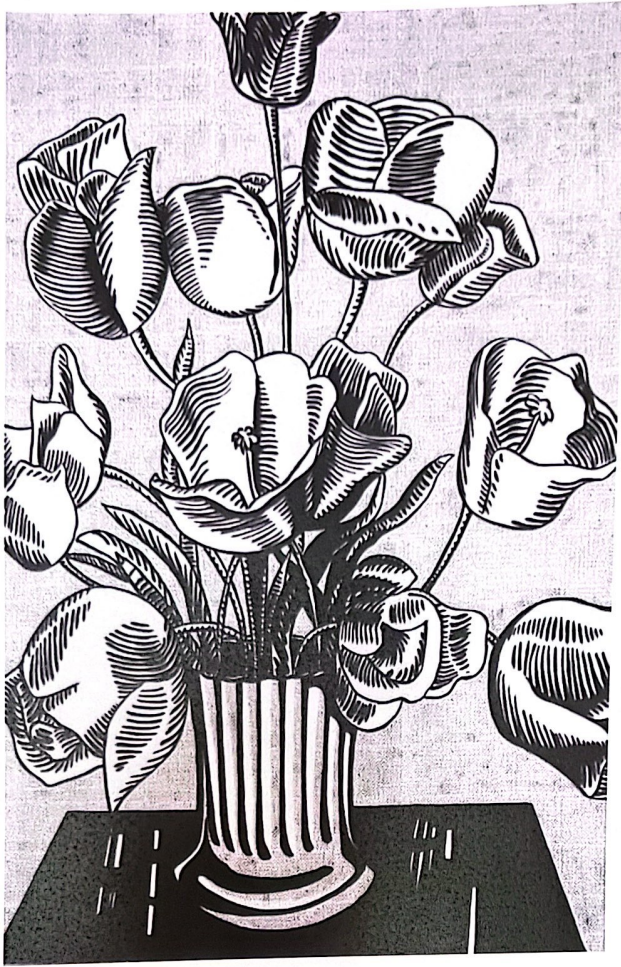


Plate (1b) Roy Lichtenstein. *Black Flowers*. 1961. Oil on canvas. 177.8 x 121.9cm

(B) Create a piece of two-dimensional artwork based on the theme “*Last Tree on Earth*”.  
(80 marks)

Go on to the next page

2. (A) Describe, analyse and compare the forms and expressions of Plate (2a) and Plate (2b); interpret and evaluate these works. (20 marks)



Plate (2a) Umberto Boccioni. *Unique Forms of Continuity in Space*. 1913. Bronze.  
111.2 x 88.5 x 40cm

Go on to the next page



Plate (2b) Robert Smithson. *Spiral Jetty*. 1970. Sculpture (Basalt rock, salt crystals, earth, water). 4.572 x 457.2m

- (B) Create a piece of two-dimensional work based on the theme "*Time Flies*".  
(80 marks)

Go on to the next page

3. (A) Describe, analyse and compare the forms and expressions of Plate (3a) and Plate (3b); interpret and evaluate these works. (20 marks)

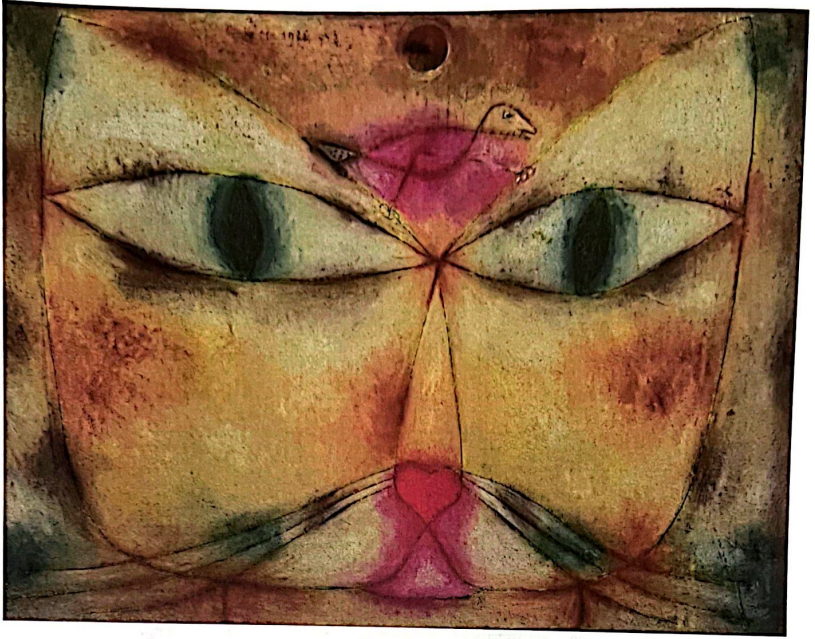


Plate (3a) Paul Klee. *Cat and Bird*. 1928. Oil and Ink on Canvas. 38.1 x 53.2 cm

Go on to the next page



Plate (3b) Jeff Koons. *Puppy*. Stainless steel, soil and flowering plants. 1992. 124 x 83 x 91 m

- (B) Create a piece of two-dimensional work based on the theme "*City Sparrow(s)*".  
(80 marks)

Go on to the next page

4. (A) Describe, analyse and compare the forms and expressions of Plate (4a) and Plate (4b); interpret and evaluate these works. (20 marks)



Plate (4a) Michael Wolf. *Architecture of Density #8b*. 2005. Photograph (Chromogenic Print). 122.2 x 152.3 cm

Go on to the next page





Plate (4b) Andy Warhol. *Campbell's Soup Cans*. 1962. Screen-print on Canvas. 50.8 x 40.6 cm x 32 canvases

(B) Create a piece of two-dimensional artwork based on the theme “*Repetition, Pattern and Rhythm*”.

(80 marks)

Go on to the next page

- 5.(A) Describe, analyse and compare the forms and expressions of Plate (5a) and Plate (5b); interpret and evaluate these works. (20 marks)

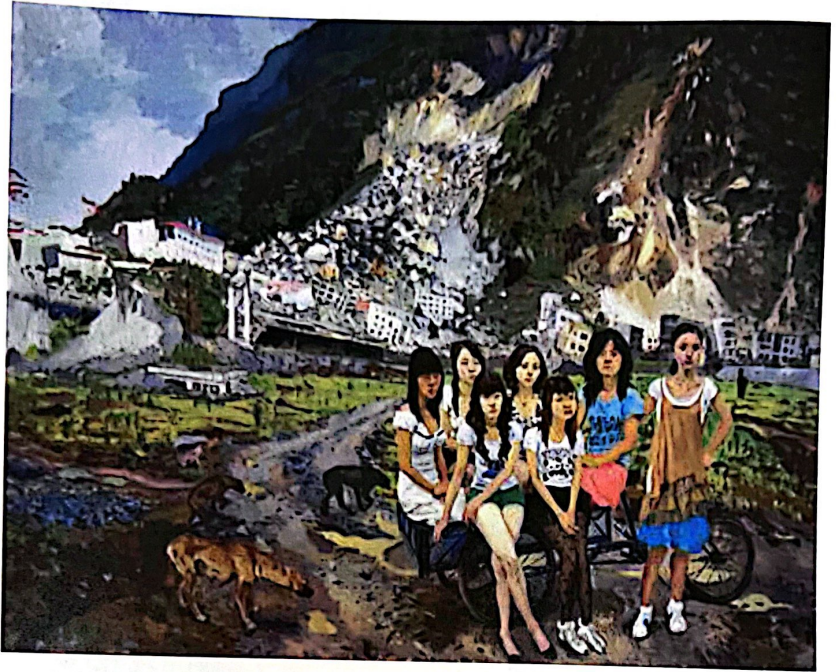


Plate (5a) Liu Xiaodong (劉小東). *Out of Beichuan (出北川)*. 2010. Oil on Canvas. 300 x 400 cm

Go on to the next page



Plate (5b) Diego Velázquez. *Las Meninas* (*The Ladies in Waiting*). 1656. Oil on Canvas. 318 x 276 cm

(B) Create a piece of two-dimensional artwork based on the theme “*Social Media Friend(s) VS Real Life Friend(s)*”. (80 marks)

– End of paper –